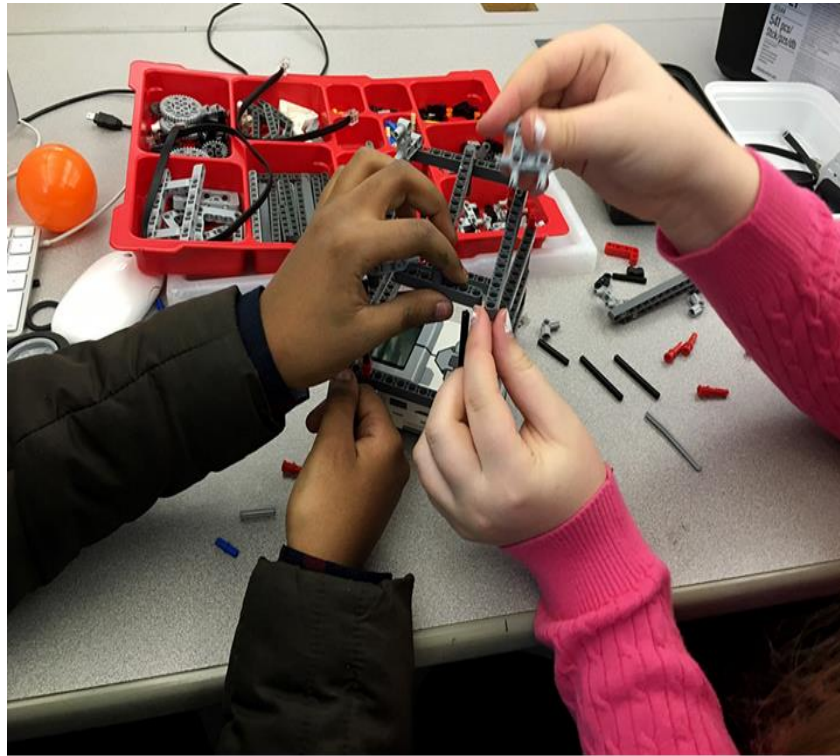


# Weston Middle School School Improvement Plan 2016-2017



**Weston Middle School  
School Council Members  
2015-16**

John Gibbons, Principal  
Breanna Kirk, Parent (2)  
Rebecca Stevenson, Parent (2)  
Gina Ladosci (1)  
Bhanu Srinivasan (1)  
Anne Mitchell (1)  
Susan Gula, Community (2)  
Janice Corley, Faculty (2)  
Georgeann Bossers (1)  
Caitlin Nolan (1)  
Caryn Grozalsky (1)

**Executive Summary:**

Imagine a learning community that brings together over 521 students, 70 dedicated teachers, 30 caring support staff, and many selfless parent volunteers into the school house every day, collectively working together to create and build a learning environment that is optimal for student growth. This is exactly what you will find in Weston Middle School, the Middle School of the Town of Weston, Massachusetts.

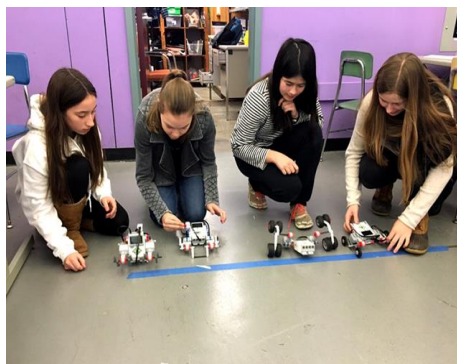
**Our charge as a School Council is to:**

1. Address:
  - The impact of class size on student performance
  - Student-to-teacher ratios
  - Ratios of students to other supportive adult resources
2. Review class sizes and to address areas of need
3. Suggest professional development for the school's staff and the allocation of any professional development funds in the school budget
4. Enhance of parental involvement in the life of the school
5. Ensure school safety and discipline
6. Foster a school environment characterized by tolerance and respect for all groups
7. Strengthen extra-curricular activities to meet the needs of our students
8. Suggest means for meeting, within the regular education programs at the school, the diverse learning needs of as many children as possible, including children with special needs currently assigned to separate programs
9. Develop any further subjects the principal, in consultation with the school council, shall consider appropriate



**Over the past year, our School Council has focused the majority of our work on the following items:**

- Home/school communication with a focus on the use of an open teacher grade book, viewable by the public. Our Council after hearing a parent petition for such a practice, and soliciting faculty and middle school leadership reflection, decided not to go in that direction. The statement about our home/school communication was published for parents in December 2015.
- The review and implementation of the suggested changes to our school safety protocols. The Council approved the move to the ALICE safety protocol, which was in line with our school district's strategic plans.
- The plan for the Middle School to move to a complete system for online progress reporting. This year the school changed from using anecdotal, paper reports, provided at each midterm and end of quarter, to online publication of progress report published in the same timelines. Through the use of the Infinite Campus teachers provide progress reports at the midterm and end of each quarter as needed for students.
- The prospect of developing a Project Based Learning initiative for the Middle School. The Council unanimously endorsed and supported the development of a PBL project for the upcoming school year.
- The proposed changes to our program of studies in our math program. The Council supported the elimination of the Algebra 7 course for next year with a redesign of the Grade 7 Honors course, focusing on differentiation as a teaching strategy. The change to the new model allows for yearly reflection, movement between levels as recommended, and the possibility of including a discreet math component in response to cohort strength.
- The annual budget and supported the proposed budget for the FY17 school year. It represents a balanced strategy that ensured small class sizes, student/teacher ratios, and attention to special programming, particularly in special education where the school continues to solidify its Language Based Classroom instructional model and our ACCESS instructional model. The Council supported the addition of a Team Chair position in our special education program.
- Review and support of the 1-1 technology program at the Middle School. In the upcoming school year, grades 6-7 will continue with our current I-Pad model, while grade 8 will move to the implementation of Chrome Books.





# 2016-2017 School Improvement Goals and Actions

## 1. Enhance Student Support

- Maintain students enrolled in DSP
- Maintain 3 Grade level HW clubs servicing over 30 students
- Maintain METCO HW club four days a week
- Provide AM/PM Faculty extra help sessions
- Implement all special education faculty trained in Orton-Gillingham
- Provide professional development for special education faculty in the areas of Sped Law, and supporting struggling math students
- Attach adjustment counselor to support caseloads
- Review PARCC/MCAS data in teacher content area teams and target support for students in 1,2,3 or W/NI levels
- Add co-taught math class and separate math and ELA Language based classes



*Middle School dismissal*

## **2. Develop a Project Based Learning Model**

- Project Development in Summer Workshop 2 day training
- Hybrid model plan created
- Public presentations
- PBL units developed by January 2017
- Implementation of the PBL Project in the spring 2017

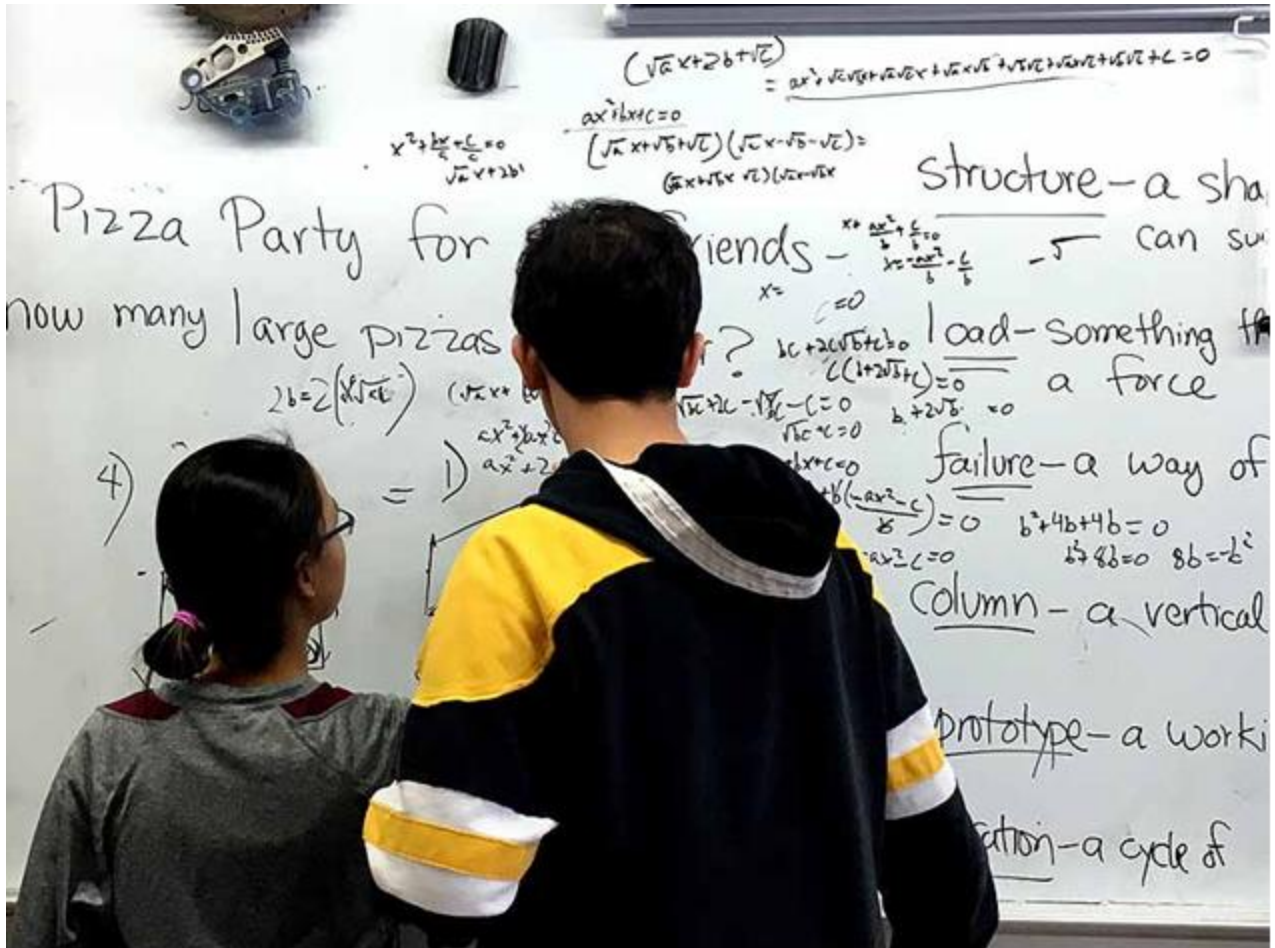


*Grade 8 Robotics Class*



### 3. Implement Math Program Changes

- Eliminate Algebra 7 and Advanced Algebra 8 over two years
- Redesign Honors 7 and 8 courses with a focus on differentiated instruction
- Allow for cohort flexibility as necessary
- Monitor student progress through assessment data and anecdotal reporting



Students engaged in solving a math problem

#### **4. Implement the new Chromebook Plan**

- Institute the Grade 8 roll-out
- Train faculty in summer workshops
- Present parent forums in the fall 2016
- Assess progress throughout the year through teacher observations, student feedback, and SAMR model rubric



*Scene from "The Accordion Shop"*

## 5. Improve the Special Education student achievement gap

- Analyze PARCC/MCAS Data in the fall 2016
- Implement targeted student supports at each grade level
- Provide test format preparations
- Use strategies classes to target student needs
- Provide general education teacher training on differentiated instruction
- Use interim assessments to monitor student progress

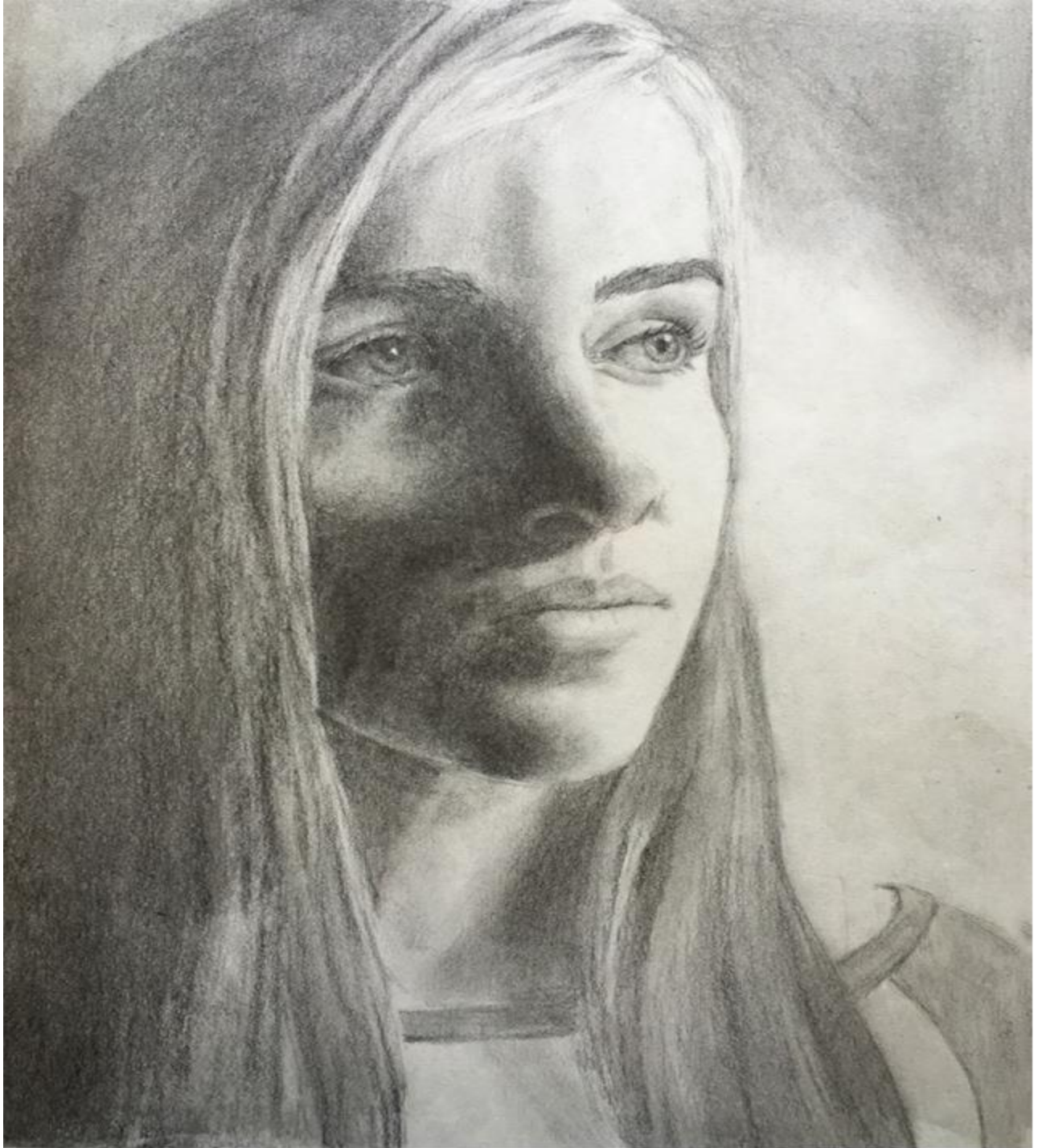


*Middle School faculty collaborating in a workshop*



## **6. Develop our Language Based Instructional Model**

- Provide LBCs in ELA and Math (6-8)
- Provide content area wrap around support with teachers and learning assistants
- Provide direct phonology instruction
- Enhance our teacher certifications through teacher training



*Self Portrait by grade 8 student Sara Goldstein*